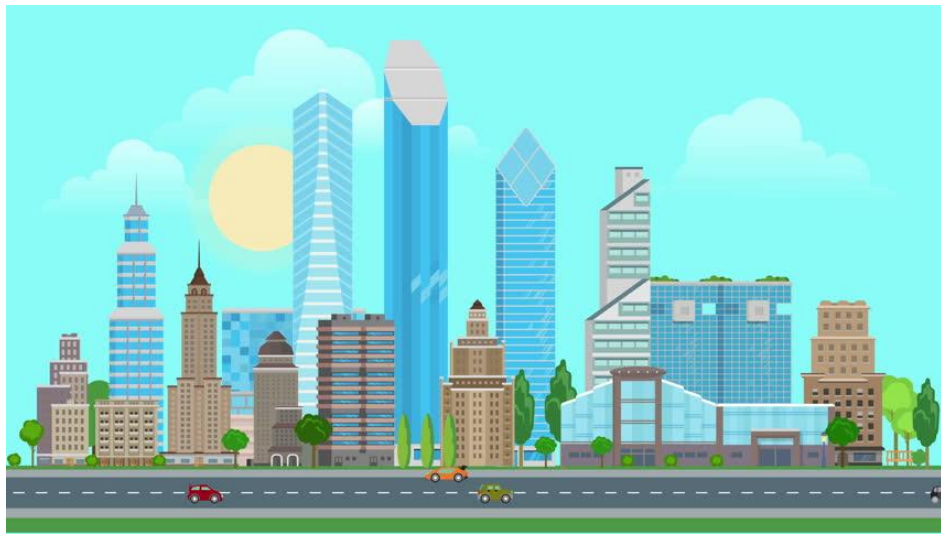


# URBAN AREA



Cities and towns are urban areas.

Buildings are close together and there are few open spaces.

There is a large variety of public services (buses, trains, metro...).

There is a large variety of jobs (shops, international companies)



# RURAL AREA



Villages and small towns are rural areas.

Buildings are far apart and there are more open spaces.

People share public services (hospitals, schools) with other villages. Public transport is usually buses.

There is less variety of jobs (shops, farming, fishing, mining).

